



**Year 10 - ICT- Revision Worksheet**

**Question 1: Tick the correct answer**

- 1. Tick correct answers from the followings regarding Bluetooth
  - a. Connect over short distances
  - b. Need to be paired with each other before they can communicate.
  - c. Higher bandwidth
  - d. High security
  - e. Connect limited devices simultaneously
  
- 2. Tick correct answers from the followings regarding IR
  - a. Connect over short distances
  - b. Need to be paired with each other before they can communicate.
  - c. Higher bandwidth
  - d. Transmitters must have a clear line of sight to receivers
  - e. Connect range of devices simultaneously
  
- 3. Which of the followings is a feature of 3G?
  - a. Basic voice service
  - b. Ip based protocols
  - c. First mobile broadband
  
- 4. Which of the followings is a feature of 4G?
  - a. Basic voice service
  - b. Ip based protocols
  - c. First mobile broadband
  
- 5. Which of the followings uses close proximity RFID (Radio Frequency Identification) chips?
  - a. Bluetooth
  - b. NFC
  - c. IR

**Question 2:**

- 1. A large supermarket has several EPOS (Electronic Point of Sale) terminals linked to a computer.
  - (a) Each product for sale has a bar code on it. The bar code is made up of a pattern of bars.
    - (i) Identify the type of device used to input data from the bar code.

.....

(ii) Identify what the pattern of bars represents.

.....

.....

(iii) Give two benefits to the customer when bar codes are used at the checkout.

.....  
.....

(iv) What is the type of barcode are used at supermarkets?

.....  
.....

(v) Give another type of barcode can be used in different applications?

.....  
.....

(vi) Give two advantages of the type of barcode mentioned in question (v) compared to the other mentioned in question (iv)?

.....  
.....  
.....

2. Identify one device that can be used for both input and visual output.

.....  
.....

An optical disc is an example of portable storage media.

(a) Name two types of optical disc.

.....  
.....

(b) Identify two examples of data that could be stored on an optical disc.

.....  
.....

Some removable storage devices use flash memory.

(c) Name one removable storage device that uses flash memory.

.....  
.....

3. Tom wants to buy a laptop. He read an advert that says that laptop comes with many pieces of software and has a WIMP interface.

(a) What is meant by software?

.....  
.....  
.....

(b) List **4 other** features of a WIMP interface which Tom could use.

.....

.....

.....

.....

(c) Which is the main software that should be installed for the laptop to start working?

.....

4. The computer has a 2 TB hard drive.

(a) State what is meant by the term TB.

.....

(b) Identify the speed of the computer processor.

.....

(c) Give two types of external storage devices that can be used with the computer.

.....

.....

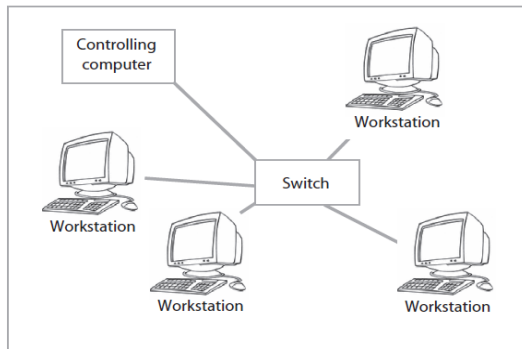
(d) The computer has a graphics card.

Identify one type of application that will benefit from having a high capacity graphics card.

.....

5. Tim has set up a small network in his home. The network is used by him and his son Sam. The network can be accessed via a wired connection to a PC and a wireless connection to a laptop.

The network has four workstations linked through a switch to a controlling computer.



(a) Name the controlling computer in the home network.

.....

(b) A laptop can be linked using WiFi or Bluetooth.  
Identify two advantages of using WiFi rather than Bluetooth.

.....

.....

.....

(c) Give two advantages of a wireless connection over a wired connection.

.....

.....

.....

.....

.....

.....

6. Sam has bought a new laptop with 4GB RAM, 3.0 GHz of processor and 'Genuine Windows Vista® Home Premium' operating systems installed.

(a) What is the type of software it belongs to?

.....

(b) He would like to personalise the settings to suit his needs. Identify 2 settings he will be able to change.

.....

.....

.....

(c) What is an Utility program? Explain the purpose of the any one type of utility program.

.....

.....

.....



.....  
8. Devices can be used to enter information automatically.

(a) Give two advantages of inputting data using these devices rather than entering the data manually.  
.....  
.....

(b) What is a concept keyboard? Give one advantage and one disadvantage of a concept keyboard.  
.....  
.....  
.....  
.....

9. Supermarket customers can pay for their goods using bank cards.

(a) Identify the additional hardware that is needed at the checkout to process their payments.  
.....

(b) Electronic data on a bank card can be stored on a microchip or a magnetic stripe. Describe **two** reasons why storing data on a microchip is preferable to storing data on a magnetic stripe.  
.....  
.....

10. A country has a number of local libraries in various towns. Books currently belong to each library and there is no system for the exchange of books between libraries. Each library has a local area network (LAN) for lending and enquiries.

(a) Define Server.  
.....  
.....  
.....  
.....

(b) Name 2 other devices which could be added to the network each of which would be a resource shared by users (administrators and/or borrowers) of the network.  
.....  
.....

(c) Give 2 advantages and 2 disadvantages of a network.

.....

.....

.....

.....

11. What is a peer to peer network and draw a structure of a peer to peer network with 5 machines.



13. Internet threats are becoming a burning issue in today's world.

Write four threats with a brief description of each, problems and solution to overcome the mentioned issue in the following table.

<b>Threat</b>	<b>Problem/ threat to user or the system</b>	<b>Solution</b>

14. A large company has two separate sites both of which have a LAN. The manager of the company wants to connect the LANs to form a WAN.

a) Name three network devices which could be found in a LAN that is not connected to a WAN.

.....  
.....  
.....

b) The manager wants to buy a router to connect the LANs. Describe the function of a router.

.....  
.....  
.....

c) The company's workers are concerned that their data may not be secure. Name three authentication techniques and for each one explain how it will help to prevent illegal access to the data.

1.....  
.....  
.....

2.....  
.....  
.....

3.....  
.....  
.....

15. Many employees use the internet for work.

Discuss the impact of the use of the internet on how people work.

.....  
.....



