



OUR REF : .....

TRN : 100259955100003

Friday, 16<sup>th</sup> May 2025

**To: The Parents of students in Years 1-13**

**WEEKLY CIRCULAR BEFORE WEEK THIRTY-TWO**

Dear Parents,

**Greetings from Saint Mary's.** We trust that this update finds you and your families safe and healthy. Please read on for all the latest updates.

**NEW**

- SCHOOL ENDS AT 11:00 AM FROM 19<sup>TH</sup> MAY UNTIL 28<sup>TH</sup> MAY 2025- YEARS 1-10 (Year 12 depending on the duration of each exam).**
- A-LEVEL ADMISSION NOW OPEN FOR OUR CURRENT YEAR 11 STUDENTS - please check the attachment.**
- MEDICAL CERTIFICATE IS MANDATORY TO RESCHEDULE ANY FINAL EXAMINATION MISSED DUE TO ILLNESS.**

**PLEASE NOTE THAT ANY FEES THAT HAVE NOT BEEN PAID ARE NOW CONSIDERED OUTSTANDING AND IN SUCH CASES, WE WILL NOT BE ABLE TO ISSUE ANY OFFICIAL SCHOOL DOCUMENTS, EXAMINATION ANSWER SCRIPTS, REPORT CARDS, ETC...**

**Please note: In cases of outstanding fees, RE-REGISTRATION MUST NOT BE PAID, even if paid, it is not considered as a re-registration but will be adjusted towards the outstanding fees. We urge parents to please be responsible and settle ALL OUTSTANDING fees without any further delay.**

**1) SCHOOL ENDS AT 11:00 AM FOR ALL STUDENTS FROM YEARS 1-10 FROM 19<sup>TH</sup> -28<sup>TH</sup> MAY 2025:** Please make a note of this so that children are picked up on time. Year 12 students will be sent home after they have completed the day's exam.

**2) A-LEVEL APPLICATION TO YEAR 12: A link for admission form as well as a letter regarding admissions has been sent out with this circular. Please go through it carefully.**

**3) MANDATORY REQUIREMENT OF A MEDICAL CERTIFICATE TO RESCHEDULE ANY MISSED FINAL EXAMINATION ( YEARS 1-10 & 12 ):** Parents are reminded that the school will not be able to reschedule any missed final exam in the absence of a medical certificate and since marks would not be credited where a re-exam has not been undertaken, it would impact the child's overall attainment.

**4) EXAMINATIONS RULES AND REGULATIONS-Years 1-10 and 12:**

a) If your child is **very ill** and unable to attend school send an email to the class teachers with the medical certificate informing them of the absence . We will only re-schedule exams that have been missed for this reason. Re-scheduled exams are usually scheduled as soon as the child returns or if there are many then these might be scheduled for a Saturday and/ or Sunday depending on how many exams have been missed. Please do not keep children at home for minor reasons. Any illness will require a medical certificate for rescheduling a test.

**b) Any absence will require a medical certificate to reschedule the exam, even if the absence is only for ONE DAY. In the absence of a medical certificate, an exam will not be rescheduled, and no marks will be credited for that missed examination.**

c) Students must carry their stationery in a transparent plastic case or pouch. No borrowing will be permitted so please ensure that you have the required pens, pencils, erasers and geometry items as needed.

d) **NO WATCHES ( ANALOG / DIGITAL OR SMART ) ARE ALLOWED DURING EXAMINATIONS.**

e) Students must not have in their possession any electronic devices to include but not limited to mobile phones, smart watches, tablets, laptops, Bluetooth devices, iPod, mp3/4 players etc. If any of these items are found with a student during a test , they will be given a zero.

- f) Students must not have any unauthorised material during an exam – notes, chits of paper with written notes, any written notes concealed in the desk or on the person. If any of these are found with a student during an exam, they will be given a zero ( irrespective of the intent or the lack of it )
- g) Students must not resort to any form of malpractice during an exam ; they must not speak to any other students during an exam. Any form of malpractice will lead to being given a zero for that particular exam.
- h) Students writing with pens **MUST ONLY USE A BLACK BALL POINT PEN.**
- i) NO ink erasers, correcting fluid or ink killers are permitted for examinations.
- j) Students must be on time for exams; no extra time will be given to late comers.

**5) SAINTZ MUN:** Delegates, mark your calendars, because the dates for the much-anticipated SaintzMUN are here! The third edition of our intra school MUN conference, SaintzMUN'25 will take place on 20<sup>th</sup> to 22<sup>nd</sup> June 2025. Further details will follow later.

**6) SIMPLY BOTTLES COMPETITIONS:** Please check the attached flyers and please email Ms. Bindhu Harikumar if you are interested.

**7) GL EXAMINATIONS IN ENGLISH LANGUAGE, MATHS & SCIENCE YEARS 4-10:** We are requesting parents of students in Years 4-10 to kindly check the link to the separate circular on GL examinations. The timetable for these exams has also been included. The payment of AED90/- must be made on Skiplly. **ALL STUDENTS MUST BE PRESENT ON THE DAY OF A GL EXAM WITH A FULLY CHARGED DEVICE. Any absence will require a medical certificate to reschedule the exam, even if the absence is only for ONE DAY.**

**8) RE-REGISTRATION FOR THE NEXT ACADEMIC YEAR 2025-2026 (YEARS 1-10 & YEAR 12:** The **DEADLINE** for re-registration was **15<sup>th</sup> APRIL 2025.**

**9) RECYCLING CHALLENGE IN PARTNERSHIP WITH BIC PENS UNTIL JUNE 2025:** Students are invited to collect all used plastic pens and markers for recycling from now until June 2025 for a chance to win exciting prizes.

**10) APPROVED KHDA CALENDAR FOR ACADEMIC YEAR 2024-2025:** Parents are requested to check the approved KHDA School Calendar for the Academic Year 2024-2025 that has been attached to this circular for your easy reference. This will help you plan ahead. If the regulators make any changes to the same, we will inform you immediately. Please note that only emergency medical leave will be approved during school days. Leave for family holidays and celebrations must coincide with the school holidays as per the KHDA calendar. **Leave for events like graduations, weddings, parties etc will not be granted during school days and if absences like this occur during exams, there will be no re-exams in that case. We expect parents to respect these dates and not request leave during school days.**

### **KEY DATES IN THE APPROVED KHDA CALENDAR**

**Parents are strongly reminded not to plan holidays/ celebrations and other events outside the approved holiday slots in the calendar as these will not be approved.**

19 <sup>th</sup> to 28 <sup>th</sup> MAY 2025	Final Exams and students go home at <b>11:00 am</b>
5 <sup>th</sup> & 6 <sup>th</sup> JUNE 2025	Eid Al Adha (subject to government declaration)
26 <sup>th</sup> JUNE 2025	Government Holiday
27 <sup>th</sup> JUNE 2025	Last day of school

**Please note that the GL EXAMS usually take place during the month of May and June.**

**11) PREDICTED GRADES POLICY FOR YEARS 12 & 13:** We would like to remind all parents and students to carefully go through this Policy that is available on our school website. The situation that unfolded over the last few years made many children realise, albeit too late the true value of being consistent with their study habits and not waiting until the last minute before exams to prepare and study. It is always best for every child to be **CONSISTENT AND HIGHLY REGULAR** with their study and ensure that they maintain a good level of attainment across all their assessment opportunities and prepare as well as they can for their Board Examinations. This will also help them to achieve better predicted grades as every assessment and examination counts towards the calculation of the same.

**12) SUBJECT CHANGE POLICY, YEARS 9 TO 13:** We would like to request all parents of children in these year groups to please go through the Subject Change Policy which is available in the Parents' Info section of the school website.

### **13) SOCIAL MEDIA FREQUENT CHECKS BY PARENTS FOR SECONDARY &**

**UPPER PRIMARY CHILDREN:** Parents of secondary and upper primary children are strongly encouraged to kindly make frequent checks of your child's use of social media. We have seen in many cases that minor children are being sought out on Instagram, Snapchat and other platforms by much older individuals for chats and conversations. It is important for parents to know who their children are conversing with to protect them from any potential safeguarding issues. We would also like to remind parents about your children's use of inappropriate content and language on Social Media Platforms which you will be aware of only if you make frequent checks of the same. Please have your child remove himself/herself from private social media groups that are not encouraged or recommended by us at St. Mary's. The school cannot take responsibility for private groups started by students, and we strongly discourage the formation of these groups as well as discourage student participation in them. It is once again important here that ALL PARENTS check your children's digital activity frequently including group activity if your child is part of private groups created by students.

### **14) STUDENT ABSENCES MUST BE INFORMED BY PARENTS:**

All parents are requested to kindly inform the class teacher via email whenever a child is absent, even if it is just for one day. A simple email with the reason for the absence will suffice but is mandatory. Unaccounted for absences will be marked as unjustified and will be reflected on students' progress reports.

### **15) NO FEE PAYMENTS MUST BE DEPOSITED INTO THE SCHOOL ACCOUNT:**

Parents are reminded that fee payments MUST not be deposited into the school account. Kindly come to school if you wish to pay fees in cash so that we can issue the fee receipt immediately.

### **16) URGENT QUERIES AND CONCERNS:**

If you have any urgent queries and concerns, kindly send an email to our Vice Principal, Ms. Lise-Ann on [l.pinto-smchs@smgeducation.org](mailto:l.pinto-smchs@smgeducation.org) and she will get back to you. Please include your telephone number in case she needs to call you.

We take this opportunity to wish each and every one of you a safe and happy weekend.

Yours sincerely



Mr. Paul Asir Joseph  
(Principal)





OUR REF : .....

TRN : 100259955100003

DATE: Friday, 16<sup>th</sup> May 2025.

**To: Parents of Year Eleven Students Applying for  
GCE A-Level Two Year Course ( YEAR 12 AND 13 )**

Dear Parents,

**Greetings from St. Mary's Catholic High School Dubai.** We are writing to inform you that the **A-LEVEL APPLICATION FORMS** are available via the link attached. The last day to submit these forms online is the 20<sup>th</sup> of June 2025. **PLEASE NOTE THAT NO FORM WILL BE ACCEPTED AFTER THIS DATE.**

**We would like to point out very clearly that admission to A-Level is not automatic and is a completely new process.**

The conditions for a student to be considered for a place in A-Levels are as follows.

- **SHOULD HAVE AN EXCELLENT BEHAVIOUR RECORD**
- **4 SUBJECTS TO BE OPTED FOR and a high-grade average in the same.**
- **Admissions will be MERIT-BASED.**
- **Hold a high-grade *average* in all subjects (Internal Exams) in Year Eleven.**
- **Should have not had any serious or repeated disciplinary issues over Years Nine through Eleven.**
- **Should not have engaged in activities, in or out of school, which tarnish the reputation of the school.**
- **Hold a minimum attendance record of 95%**
- **Be prepared for an entrance exam in the subject opted for that has not been taken at O-Level. The portion for the entrance exam is all content covered from Year 9 to Year 11.**

**We would also like to bring to your attention that under the British system, a student completes high school with the completion of his/her O-Level. Hence the admission to A-Level is then a process of a 'NEW ADMISSION'.**

**Those students who take Arabic as a First language and Islamic Studies in A-Level will have to maintain a minimum aggregate attendance percentage of 95% for Arabic and / or Islamic Studies lessons, FAILING WHICH STUDENTS WILL NOT BE ISSUED A SCHOOL LEAVING CERTIFICATE/ATTESTED CERTIFICATES OR RECOMMENDATION LETTERS. Students who do not reflect this 95% aggregate attendance after the first month of enrollment might not be allowed to continue the A-Level programme.**

Please note that St. Mary's Catholic High School offers the GCE Advanced Levels Linear Programme which means that we DO NOT OFFER **AS LEVEL CERTIFICATION** at the end of Year 12. This is a standalone qualification and results are declared only at the end of Year 13.

**The whole two year Programme has to be completed for any equivalency certification.**

Please consider all the criteria above while making your decision. Parents should also be aware that even if all criteria are met, **competition for places remains very stiff as seats are limited** and therefore, **we strongly recommend that all students should ensure that they have a back-up plan. This would include applying to other institutions besides St. Mary's.**

**The final deadline for the submission of the A-LEVEL application forms is 20<sup>th</sup> June 2025. Forms will not be accepted after this date neither will any calls be accepted for the same. Please respect this final deadline.**

**The list of students selected for VIRTUAL interviews will be posted on the school website after results have been released by Pearson Edexcel in August 2025 and so we advise you to check the school website at that time.**

**PLEASE USE THE LINK BELOW.**



<https://smchs.ethdigitalcampus.com/RegistrationPortal/forms/Utility/Login.jsp?dbConnVar=SMCHS>

Thank you for your kind co-operation.

Yours sincerely,

A handwritten signature in green ink, appearing to read "Paul Asir Joseph".

**Mr. Paul Asir Joseph**  
( Principal )

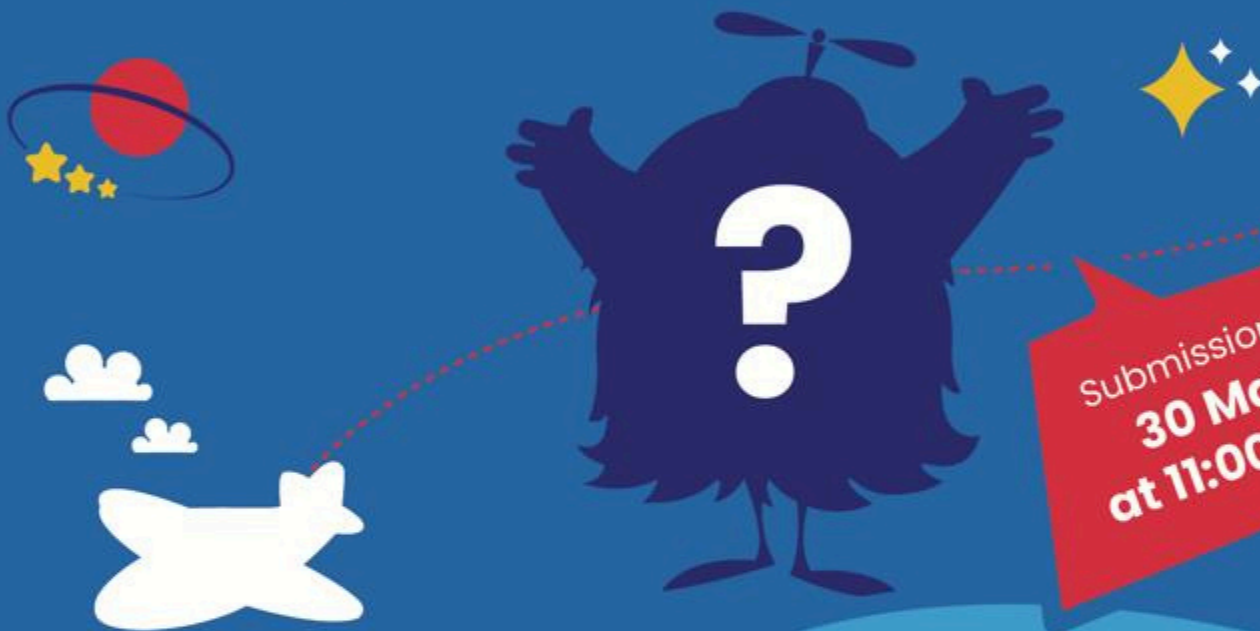




# Calling all young creators, artists, and dreamers!

The Dubai Airshow needs a mascot—and we want **YOU** to design it!  
Imagine a character that represents flight, innovation, and the future.

Your Imagination Could Take Flight at the World's Biggest Airshow



Submission Deadline:  
**30 May 2025**  
at 11:00am (GST)

Age Group: **4-17**

Judging Criteria:  
**Creativity, originality,  
relevance to aviation  
and Dubai Airshow**

Prize:

**AED 750  
Virgin Megastore  
voucher**

Exclusive Invitation:

**The winner, classmates  
and family, will attend  
the Mascot's Official  
Presentation at SkyView  
on 17 Nov 2025.**



Scan the QR code  
for full details and  
entry submission.

[Click here](#) for further details.



## FINAL EXAMINATIONS – (YEARS 1 – 4) MAY 2025

DATE	DAY	YEAR ONE	YEAR TWO	YEAR THREE	YEAR FOUR
14 <sup>th</sup> May	Wed	English Writing	English Writing	PSHE & English Reading	English Language
15 <sup>th</sup> May	Thu	No Exam	Maths	UAE Social Stu.	Moral Education
16 <sup>th</sup> May	Fri	Science	English Reading	Maths	Maths
19 <sup>th</sup> May	Mon	English Reading	No Exam	No Exam	English Lit.
20 <sup>th</sup> May	Tue	No Exam	Arabic	Geography	French & GL English- bring a fully charged device
21 <sup>st</sup> May	Wed	A day of Healthy eating	UAE Social Stu.	Moral Education	Islamic. Stu. / Values Ed/Ctz
22 <sup>nd</sup> May	Thu	PSHE	Islamic. Stu. / Values Ed/Ctz	English Writing	Arabic
23 <sup>rd</sup> May	Fri	Maths	Science	Science	Science
26 <sup>th</sup> May	Mon	A day out	PSHE	Islamic. Stu./ Values Ed/Ctz	History
27 <sup>th</sup> May	Tue	Islamic. Stu./ Values Ed/Ctz	History	Arabic	Geography
28 <sup>th</sup> May	Wed	Arabic	Moral Education	History	UAE Social Stu

- On the 14<sup>th</sup>, 15<sup>th</sup> and 16<sup>th</sup> of May - regular lessons after the exams.
- 19<sup>th</sup> – 28<sup>th</sup> May- students leave after the exams at 11:00 am.
- When there is NO EXAM-students remain at home.



**FINAL EXAMINATIONS – (YEARS 5 & 6) MAY 2025**

DATE	DAY	YEAR FIVE	YEAR SIX
14 <sup>th</sup> May	Wed	English Language & French	English Language & History
15 <sup>th</sup> May	Thu	Geography & English Literature	Moral Education & Art
16 <sup>th</sup> May	Fri	Moral Education	Islamic. Stu./ Values Ed/Ctz & Geography
19 <sup>th</sup> May	Mon	Science	English Literature
20 <sup>th</sup> May	Tue	UAE Social Studies	Arabic
21 <sup>st</sup> May	Wed	History & Art	UAE Social Studies
22 <sup>nd</sup> May	Thu	Islamic Stu./ Values Ed /Ctz	ENGLISH GL – bring a fully charged device
23 <sup>rd</sup> May	Fri	Maths	Science
26 <sup>th</sup> May	Mon	Arabic	French
27 <sup>th</sup> May	Tue	ENGLISH GL – bring a fully charged device	Maths
28 <sup>th</sup> May	Wed	No exam	No exam

- On the 14<sup>th</sup>, 15<sup>th</sup> and 16<sup>th</sup> of May - regular lessons after the exams.
- 19<sup>th</sup> – 28<sup>th</sup> May- students leave after the exams at 11:00 am.
- When there is NO EXAM-students remain at home.



**FINAL EXAMINATIONS – (YEARS 7 & 8) MAY 2025**

DATE	DAY	YEAR SEVEN	YEAR EIGHT
14 <sup>TH</sup> May	Wed	English Language 1 & 2 Paper 2 before break Paper 1 after break	English Language 1 & 2 Paper 2 before break Paper 1 after break
15 <sup>th</sup> May	Thu	English Literature 1 & 2	English Literature 1 & 2
16 <sup>th</sup> May	Fri	Moral Education & Islamic. Stu. / Values Ed/Ctz	Maths Paper 1 & 2
19 <sup>th</sup> May	Mon	Science	Islamic. Stu./ Values Ed/Ctz
20 <sup>th</sup> May	Tue	ENGLISH GL – bring a fully charged device	UAE Social Studies & History
21 <sup>st</sup> May	Wed	French & Geography	Computing & Moral Education
22 <sup>nd</sup> May	Thu	History	Science
23 <sup>rd</sup> May	Fri	Arabic	French & Geography
26 <sup>th</sup> May	Mon	UAE Social Studies & Computing	ENGLISH GL – bring a fully charged device
27 <sup>th</sup> May	Tue	Maths	Arabic
28 <sup>th</sup> May	Wed	Art	Art

- On the 14<sup>th</sup>, 15<sup>th</sup> and 16<sup>th</sup> of May - Regular lessons after the exams.
- 19<sup>th</sup> – 28<sup>th</sup> May - Students leave after the exams at 11:00 am.
- When there is NO EXAM-students remain at home.



**FINAL EXAMINATIONS – (YEARS 9 & 10) MAY 2025**

DATE	DAY	YEAR NINE	YEAR TEN
14 <sup>th</sup> May	Wed	English Language 2 English Language 1	English Language 2 English Language 1
15 <sup>th</sup> May	Thu	Maths Cal and Non-Cal	Maths Cal and Non-Cal
16 <sup>th</sup> May	Fri	English Lit. 1 / History	English Lit. 1 / History Paper 1
19 <sup>th</sup> May	Mon	ICT/ Computer Science & Geography	Arabic
20 <sup>th</sup> May	Tue	Biology /Accounting	Physics/ Business & Moral Ed.
21 <sup>st</sup> May	Wed	Islamic. Stu. / Values Ed	Psychology & UAE SST
22 <sup>nd</sup> May	Thu	Chemistry/ Economics & UAE SST	Biology /Accounting
23 <sup>rd</sup> May	Fri	English Lit	Islamic. Stu. / Values Ed
26 <sup>th</sup> May	Mon	Psychology & Moral Ed.	Chemistry/ Economics
27 <sup>th</sup> May	Tue	Physics/ Business	ICT/ Computer Science
28 <sup>th</sup> May	Wed	Arabic	English Lit 2/ History Paper 2

- On the 14<sup>th</sup> ,15<sup>th</sup> and 16<sup>th</sup> of May - Regular lessons after the exams.
- 19<sup>th</sup> – 28<sup>th</sup> May- students leave after the exams at 11:00 am.
- When there is NO EXAM-students remain at home.
- YEAR 10 Art exam 12<sup>th</sup> and 13<sup>th</sup> May 2025.
- YEAR 9 Art Exam 29<sup>th</sup> and 30<sup>th</sup> May 2025.





## **ST. MARY'S** *Catholic High School, Dubai*

### **FINAL EXAMINATIONS – (YEAR 12) MAY 2025**

<b>DATE</b>	<b>DAY</b>	<b>Year 12</b>
14 <sup>th</sup> May	Wed	<b>Physics 1- 2hrs 30 min &amp; Islamic Studies – 2hrs</b>
15 <sup>th</sup> May	Thu	<b>Business Studies 1 – 2hrs Mathematics ( Pure )- 2hrs</b>
16 <sup>th</sup> May	Fri	<b>Biology 1-2hrs 30 min</b>
19 <sup>th</sup> May	Mon	<b>Psychology 1-2hrs</b>
20 <sup>th</sup> May	Tue	<b>Economics 1-2hrs</b>
21 <sup>st</sup> May	Wed	<b>Arabic (A) - 2hrs 30 min Arabic (B) – 2hrs</b>
22 <sup>nd</sup> May	Thu	<b>Mathematics ( Statistics)- 2hrs</b>
23 <sup>rd</sup> May	Fri	<b>Chemistry 1-2hrs 30 min</b>
26 <sup>th</sup> May	Mon	<b>REGULAR LESSONS TILL 11:00 AM-ATTENDANCE MANDATORY</b>
27 <sup>th</sup> May	Tue	<b>REGULAR LESSONS TILL 11:00 AM-ATTENDANCE MANDATORY</b>
28 <sup>th</sup> May	Wed	<b>REGULAR LESSONS TILL 11:00 AM-ATTENDANCE MANDATORY</b>



OUR REF : .....

TRN : 100259955100003

DATE : Friday, 21<sup>st</sup> March 2025

**To : Parents of students in Years FOUR THROUGH TEN:**  
**GL EXAMINATIONS IN ENGLISH LANGUAGE, MATHS & SCIENCE**

Dear Parents,

**Greetings from St. Mary's Catholic High School, Dubai.** As part of our commitment to the National Agenda targets, and with a view to tracking progress and identify gaps in learning, our school will participate in the GL-Progress Tests in English, Math and Science which are online tests. GL Education, one of the leading research organizations in the world, develops this test and provides a range of Assessment services in many countries and works in close tandem with the KHDA here in Dubai. These are compulsory International Tests that have to be undertaken as mandated by KHDA.

**GL EXAMINATIONS WILL CONTRIBUTE TO THE OVERALL MARKS FOR THE FINAL EXAMINATIONS.**

**ENGLISH LANGUAGE**

YEAR GROUP	ASSESSMENT IN MAY	GL EXAMINATION	FINAL EXAMINATION RESULT
FOUR	APPLICABLE	APPLICABLE	Assessment + GL Result
FIVE	APPLICABLE	APPLICABLE	Assessment + GL Result
SIX	APPLICABLE	APPLICABLE	Assessment + GL Result
SEVEN	APPLICABLE	APPLICABLE	Assessment + GL Result
EIGHT	APPLICABLE	APPLICABLE	Assessment + GL Result
NINE	APPLICABLE	APPLICABLE	Assessment + GL Result
TEN	APPLICABLE	APPLICABLE	Assessment + GL Result

**MATHEMATICS**

YEAR GROUP	ASSESSMENT IN MAY	GL EXAMINATION	FINAL EXAMINATION RESULT
FOUR	APPLICABLE	APPLICABLE	Assessment + GL Result
FIVE	APPLICABLE	APPLICABLE	Assessment + GL Result
SIX	APPLICABLE	APPLICABLE	Assessment + GL Result
SEVEN	APPLICABLE	APPLICABLE	Assessment + GL Result
EIGHT	APPLICABLE	APPLICABLE	Assessment + GL Result
NINE	APPLICABLE	APPLICABLE	Assessment + GL Result
TEN	APPLICABLE	APPLICABLE	Assessment + GL Result

## SCIENCE

YEAR GROUP	ASSESSMENT IN MAY	GL EXAMINATION	FINAL EXAMINATION RESULT
FOUR	APPLICABLE	APPLICABLE	Assessment + GL Result
FIVE	APPLICABLE	APPLICABLE	Assessment + GL Result
SIX	APPLICABLE	APPLICABLE	Assessment + GL Result
SEVEN	APPLICABLE	<b>NOT APPLICABLE</b>	Assessment
EIGHT	APPLICABLE	APPLICABLE	Assessment + GL Result
NINE	APPLICABLE	APPLICABLE	Assessment + GL Result
TEN	APPLICABLE	APPLICABLE	Assessment + GL Result

***The entry fee is AED 90/- the exact amount of which must be paid via the SKIPLY APP .Please be aware that these are COMPULSORY EXAMS as part of the NATIONAL AGENDA and THEY ALSO CONTRIBUTE TO THE OVERALL SCORE OF THE FINAL EXAMINATIONS FOR THESE THREE SUBJECTS and no exemption can be granted to any student. The Final date for payment of the GL fee is 10<sup>th</sup> April 2025.***

These tests will be conducted in school during the month of May and June 2025. Please find the GL EXAMINATION TIMETABLE OVERLEAF. Attendance is mandatory. A medical certificate will be required in the event of any absence, even if for ONE DAY.

**We would therefore ask you as parents to kindly make this payment of AED 90/- via the SKIPLY APP and kindly email the receipt to your child's class teacher when you make the payment.**

Yours sincerely,



Mr. Paul Asir Joseph  
( Principal )







**ST. MARY'S** *Catholic High School, Dubai*

**PRIMARY GL EXAMINATION**  
**TIME TABLE MAY-JUNE 2025**

DATE	DAY	YEAR FOUR	YEAR FIVE	YEAR SIX
20th May	Tuesday	<b>ENGLISH</b> Bring a fully charged device		
22nd May	Thursday			<b>ENGLISH</b> Bring a fully charged device
27th May	Tuesday		<b>ENGLISH</b> Bring a fully charged device	
30th May	Friday		<b>MATHS</b> Bring a fully charged device	
2nd June	Monday	<b>SCIENCE</b> Bring a fully charged device		<b>SCIENCE</b> Bring a fully charged device
3rd June	Tuesday	<b>MATHS</b> Bring a fully charged device		
4th June	Wednesday		<b>SCIENCE</b> Bring a fully charged device	<b>MATHS</b> Bring a fully charged device





**ST. MARY'S** *Catholic High School, Dubai*

**SECONDARY GL EXAMINATION**  
**TIME TABLE MAY-JUNE 2025**

DATE	DAY	YEAR SEVEN	YEAR EIGHT	YEAR NINE	YEAR TEN
20th May	TUE	<b>ENGLISH</b> Bring a fully charged device			
26th May	MON		<b>ENGLISH</b> Bring a fully charged device		
29th May	THU				<b>ENGLISH</b> Bring a fully charged device
2nd June	MON			<b>ENGLISH</b> Bring a fully charged device	
4th June	WED		<b>SCIENCE</b> Bring a fully charged device		
11th June	WED	<b>MATHS</b> Bring a fully charged device		<b>MATHS</b> Bring a fully charged device	<b>SCIENCE</b> Bring a fully charged device
12th June	THU		<b>MATHS</b> Bring a fully charged device	<b>SCIENCE</b> Bring a fully charged device	
13th June	FRI				<b>MATHS</b> Bring a fully charged device

